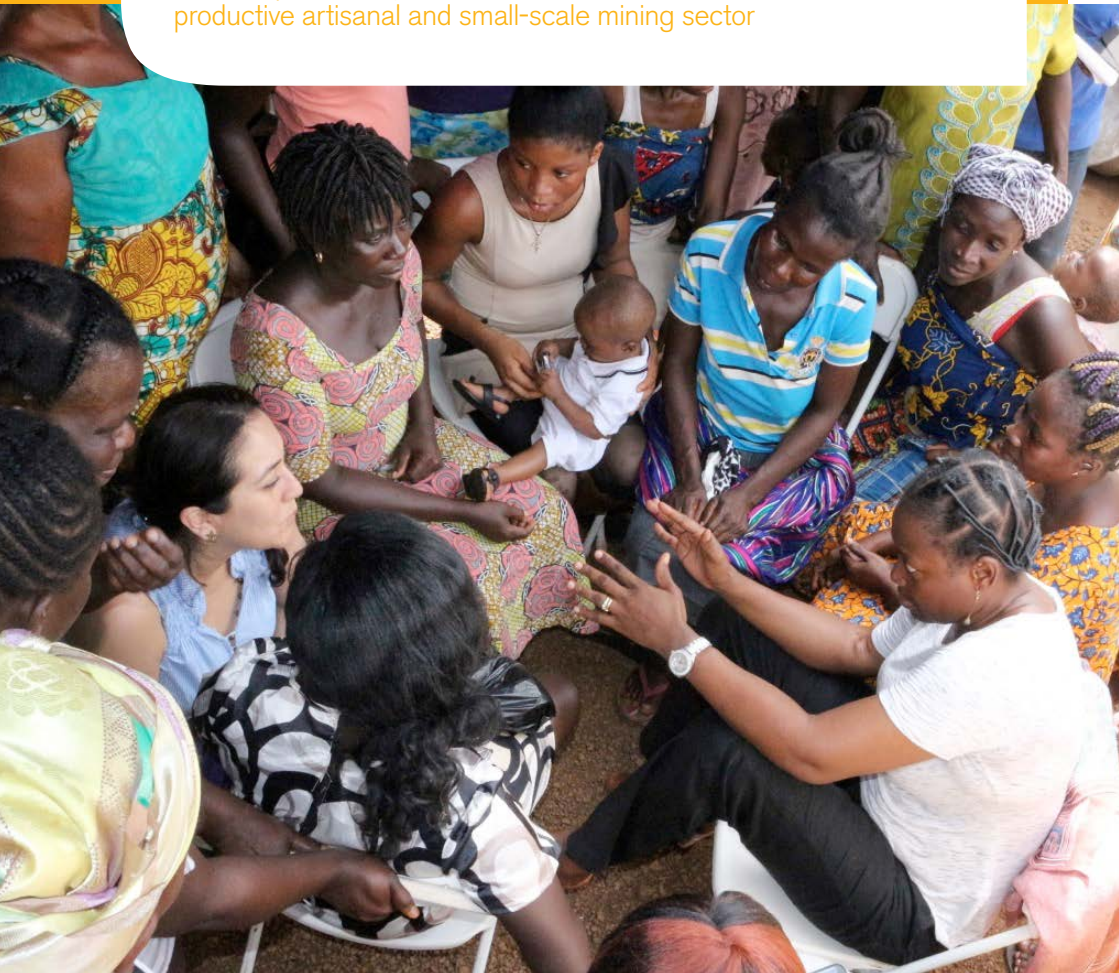


Transforming mining through dialogue

Using dialogue to kick-start transformative changes in mining and complementary rural livelihoods to deliver a sustainable and productive artisanal and small-scale mining sector



In brief

Artisanal and small-scale mining (ASM) can make a positive contribution to inclusive and equitable sustainable development and growth. IIED's ASM dialogue programme provides a much-needed forum for multi-stakeholder collaboration and knowledge sharing to promote better governance, greater voice and secure and productive employment across the mining sector and complementary rural livelihoods. By ensuring that all stakeholders participate, that the process is locally owned, and that discussions focus on solutions, our dialogues can help align this impoverished and vulnerable sector with national priorities and sustainable development agendas.

Why now?

In delivering on our global ambitions of promoting inclusive and sustainable growth, productive employment for all, gender equality and poverty alleviation, we cannot ignore the ASM sector, or write it off as environmentally and socially unsustainable. ASM involves millions of people, many of whom are women and children. Improving the sector through better governance and protection of rights can help promote food security, economic growth, gender equality, security and stability across the developing world.

But progress is hampered by negative perceptions of ASM, often underpinned by lack of knowledge and understanding. Fragmented responses, usually driven by international agendas, not local priorities, fail to bring about the broader transformations in knowledge, policy and institutional systems needed for systemic change. Our ASM dialogue programme — informed by IIED's 40-year track record in fostering participatory reform and policy change in mining, forestry and other sectors — will identify solutions that promote formalised, rights-based, productive ASM within a more inclusive and responsible mining sector.

Our approach

We do not see a dialogue as a one-off event. Rather, we understand it to be an ongoing process of engaging key players in research and priority setting, developing national ownership of a solutions-focused agenda, and promoting multi-stakeholder collaboration for change in both policy and practice. Our unique dialogue approach works to:

Create consensus on a new agenda for change. Our dialogues begin with participatory, local research to unpick complex agendas and identify solutions that build on participants' knowledge and reflections. Pre-dialogue workshops provide a space to identify and discuss challenges in advance of dialogue, helping to allay participants' concerns and work with them to move towards solutions with shared responsibility and leadership. Focusing on solutions in the dialogue itself generates confidence that barriers can be overcome.

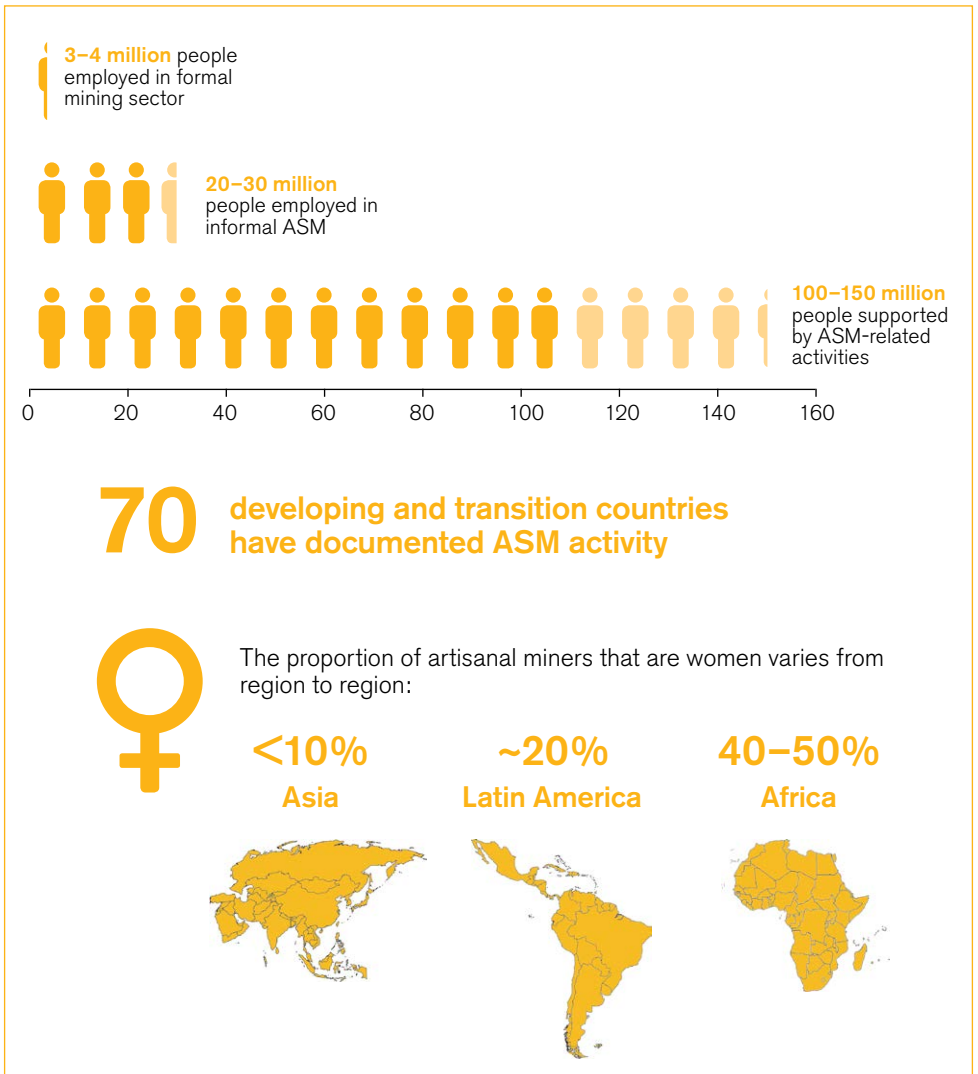
Bring unheard voices to the debate. Our engagement approach puts all stakeholders on an equal footing. By beginning the dialogue in the field, and making sure the voices of miners — especially women — are heard within the dialogue, we help move the discussion from backward-looking, abstract reflections towards thinking about the future

of local people's lives and landscapes. By focusing on communications throughout, we engage stakeholders and bring positive stories of change from the field to national and global audiences.

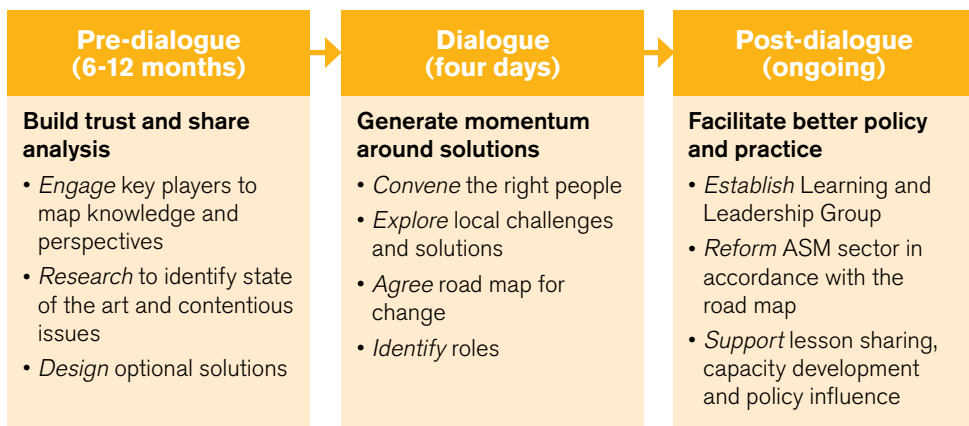
Drive leadership, enthusiasm and confidence. Through dialogue we convene and enable local actors to set and implement

the agenda with clear roles and responsibilities. National multi-stakeholder Learning and Leadership Groups (LLG) are identified and endorsed through the process. These groups are established to build and maintain engagement, collaboration and community empowerment and are key to creating a sustainable, country-led process.

ASM in numbers



Using dialogue to drive transformation in the ASM sector



Creating consensus: increasing collaboration, trust and communication between stakeholders

Improving information and knowledge sharing for ASM

Strengthening voice of marginalised actors in decision-making

FROM	TO
ASM driven by poverty and limited options	Efficient small businesses with access to information and finance
Insecure, dangerous work, especially for women and children	Empowered miners and safe and decent jobs
Environmental degradation and land use conflict	Access to clean technology; with best ASM practice followed
Outdated policy and attitudes towards ASM	Integrated, informed policy and collaborative efforts

Dialogues in action

Participatory sector reform in Ghana



IIED's first ASM country dialogue began in Ghana in 2015. So far, the dialogue process has enabled Ghanaian stakeholders to identify priorities for participatory sector reform — a long-held wish of the

authorities. Through research, dialogue and communications, IIED helped stakeholders dissect the problem into manageable pieces, bring the right people together, agree a plan of action and appoint leaders to guide them.

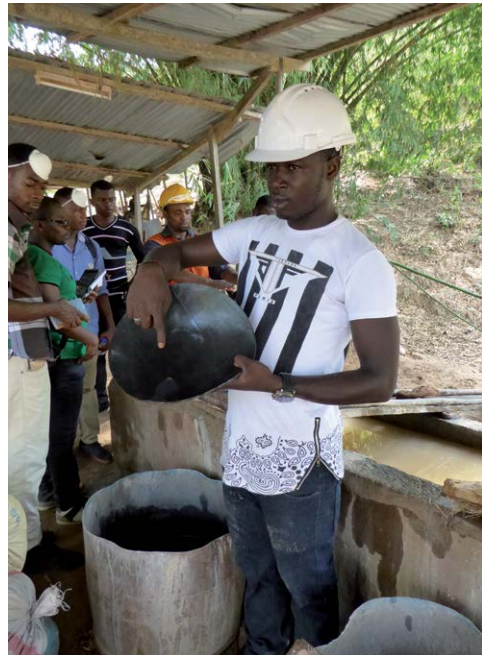
Following six months of research and consultation involving ASM miners, large mining companies, national and local government, academics and civil society, IIED and Ghanaian NGO Friends of the Nation hosted a solutions-focused dialogue in January 2016 in Tarkwa. During four days — including two days visiting mine sites and mining communities — participants learned from each other, forged new relationships, and decided together, what was needed to tackle ASM's pitfalls and realise ASM's potentials.

IIED is now supporting a group of Ghanaian government, business and community leaders — Ghana's Learning and Leadership Group — to implement the roadmap for sector reform. Their priorities include:

- demonstrating the 'business case' for responsible ASM,
- improving practices within the sector,
- building support for ASM across government institutions, and
- ensuring that ASM miners, particularly women, have a stronger voice in decision making.

"The strength of this initiative lies in the diversity of its leadership group. Together we can build an ASM sector that is streamlined, respected and generates employment and wealth. We are close to a major change in the way we do artisanal and small-scale mining in Ghana."

Toni Aubynn, chief executive officer of the Ghana Minerals Commission



Get involved

Hear what participants have to say

Visit www.iied.org/voices-artisanal-mining-communities-tarkwa-nsuaem-ghana to read or watch stories and testimonials from artisanal miners, including women and young people, from Ghana.

How we can work with you

As part of its global programme, IIED is scoping the next dialogue country and fundraising for additional country dialogues that will further enable cross-country lesson sharing and strengthen the global evidence base for ASM.

As well as collaborating with local partners to implement a full dialogue process towards sector reform, IIED provides advice and support on improving stakeholder engagement, inclusive policy development and multi-stakeholder collaboration within existing programmes and initiatives across the sector.

Get in touch to find out more:

Fitsum Weldegiorgis: Fitsum.Weldegiorgis@iied.org

Frances Reynolds: Frances.Reynolds@iied.org

You can sign up to our ASM newsletter here <http://eepurl.com/tSfNr>.

Read more

Visit www.iied.org/mining-dialogues to read more about how our work on artisanal and small-scale mining supports dialogue, promotes local voices and explores innovations that help create a more inclusive and accountable mining sector. This page includes publications and innovative digital tools too.



Project Materials

ASM

Keywords:
artisanal and small-scale mining, ASM, gold, livelihoods, informality, inclusive and responsible mining, dialogues, participatory sector reform



THE TIFFANY & CO.
FOUNDATION



FORDFOUNDATION

Photo credits:
Friends of the Nation