



# SAPA, SAGE or GAPA?

Tools for assessing the social impacts, governance, and equity of conservation

IIED has three practical and relatively low-cost tools for stakeholders / rights-holders (actors) of a protected or conserved area (PCA) to assess the social impacts, quality of governance and equity of conservation and associated development activities.

The importance of governance and the need to improve social impacts of conservation were highlighted at the IUCN World Parks Congress in 2003, and subsequently elaborated in the CBD Programme of Work on Protected Areas in 2004. More recently, Aichi Target 11 of the CBD Strategic Plan 2011-20 states that protected areas should be equitably managed. Since then, a lot has been done to elaborate key aspects of governance in a conservation context and provide governance assessments guidance, notably by IUCN and its commissions.

**Social assessment for protected and conserved areas (SAPA)** focuses on impacts of PCAs on the wellbeing of local people, plus a basic governance assessment. SAPA can be used with almost any type of PCA.

**Governance assessment for protected and conserved areas (GAPA)** focuses on governance challenges and underlying causes but only for PCAs where actors are willing to explore sensitive governance issues.

**Site-level assessment of governance and equity (SAGE)** focuses on governance and equity. SAGE is less deep than GAPA but covers a broader scope of issues and costs less. SAGE can be used with any type of PCA.

**Equity: recognition**

1. Recognition and respect for the rights of all relevant actors
2. Recognition and respect for all relevant actors and their knowledge
3. Full and effective participation of all relevant actors in decision-making

**Equity: procedure**

4. Transparency, information sharing and accountability for actions/inactions
5. Access to justice including effective dispute resolution processes
6. Fair and effective law enforcement

**Equity: distribution**

7. Effective mitigation of negative impacts on communities
8. Benefits equitably shared among relevant actors

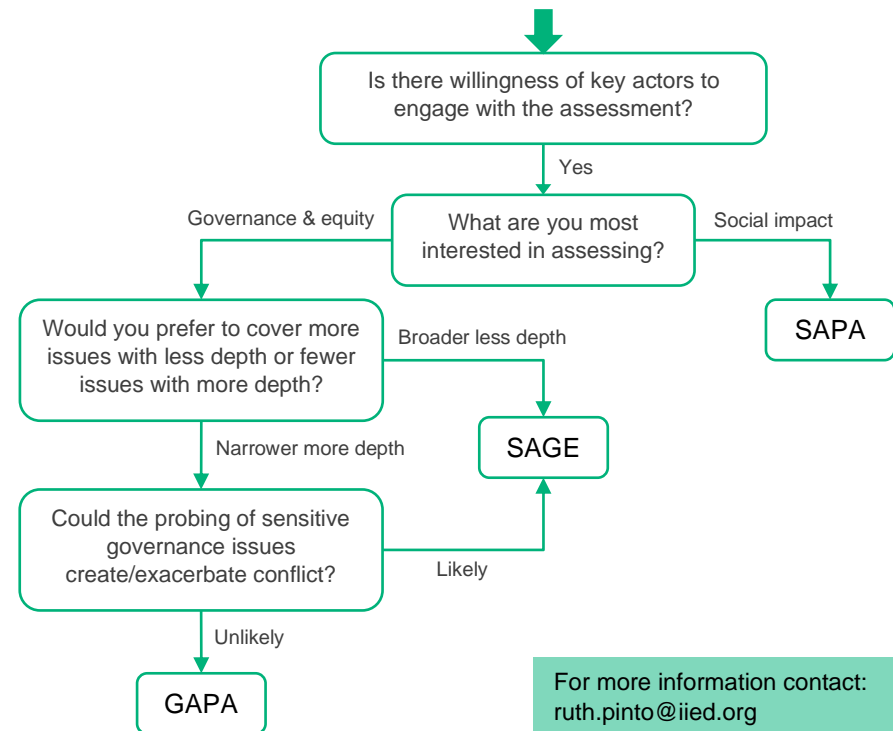
**Other governance**

9. Achievement of conservation and other objectives
10. Effective coordination and collaboration between actors, sectors & levels

Building on this work, IIED has led the development and testing of SAPA, SAGE and GAPA. These are tools for stakeholders and rightsholders of a protected or conserved area (PCA actors) to themselves assess the social impacts, governance and equity of conservation and associated development activities.

- **Social impacts:** the impacts on wellbeing of people living in or around a PCA.
- **Governance quality:** the performance of a PCA in relation to principles of equitable governance. SAPA, SAGE and GAPA use a framework of ten principles.
- **Equity:** the performance of a PCA in terms of respect for actors and their rights, participation, transparency, accountability, dispute resolution, and how costs and benefits are distributed, i.e. largely a matter of governance.

The decision tree below will help you decide which tool best suits your context and needs. Having determined which tool is most suitable, we recommend reading the feasibility criteria provided in the SAPA and GAPA manuals which check that the site has, or is able to create, the enabling conditions needed for good results.



For more information contact: [ruth.pinto@iied.org](mailto:ruth.pinto@iied.org)



	SAPA	SAGE	GAPA	Comment
Emphasis on social impacts	***			An add-on to SAGE gives basic coverage of impacts
Emphasis on governance and equity	**	***	***	SAGE and GAPA explore the perspectives on governance and equity of all key actors, while SAPA provides just the community perspective.
Scope of issues to be assessed	Up to 20 different social impacts	Up to 8 governance and equity principles	Up to 5 governance and equity principles	Issues assessed are selected by key actors according to the site context/needs
Process				We use the term "actor" as shorthand for stakeholders and rightsholders except in widely used terms such as "stakeholder workshop"
<ul style="list-style-type: none"> <li>Who makes the assessment?</li> <li>Who reviews or validates the results?</li> </ul>	Community members All key actors	All key actors All key actors	All key actors All key actors	
Main methods	Participatory Rural Appraisal ranking in a community meeting, household survey, stakeholder workshop	Questionnaire by actors individually or working in groups, stakeholder workshop	Focus group discussion and key informant interview, stakeholder workshop	With all methods, it is the actors themselves who make the assessment
Type of results	Mainly quantitative + qualitative ideas for action	Mainly quantitative + qualitative evidence and ideas for action	Mainly qualitative	Quantitative data is much easier to analyse and communicate but can lose important nuances
Objectives of the assessment				All three tools enable improvement in social impact, governance, equity at site level.
<ul style="list-style-type: none"> <li>Identifying strengths and challenges</li> <li>Diagnosing underlying problems</li> <li>Monitoring change over time</li> </ul>	** * ***	** ** ***	*** *** *	SAGE data can also be used for upward reporting versus national or global targets
Risk of creating/exacerbating conflict	*	**	***	SAGE and GAPA probe into issues that may be sensitive, especially GAPA
Number of facilitators required:				The note-takers and facilitators with little or no experience are usually locally recruited
<ul style="list-style-type: none"> <li>Facilitators with substantial experience</li> <li>Facilitators with little or no experience</li> <li>Note-takers or survey enumerators</li> </ul>	1 2 3-5	1 2-4 0-2	3-4 0 0-2	
Facilitators being perceived as neutral	Not essential	Essential	Essential	In SAPA, neutrality is achieved by staff of key actors working in balanced teams, but in SAGE or GAPA facilitators must be third party
Typical cost, including facilitators but excluding follow-up actions	USD 5000-20000	USD 2000-10000	USD 5000-15000	Cost varies according to site size, diversity of actors and the cost of logistics
Minimum duration from start to completion of assessment phase	12 weeks	4 weeks	8 weeks	At this stage, the assessment report is a PowerPoint presentation of the results